



ESCAPE+HYBRID



2010

Specifications

fordvehicles.com

Specs

DIMENSIONS & CAPACITIES

Exterior (FWD/4WD)	Escape	Hybrid
Wheelbase	103.1"	103.1"
Length	174.7"	174.7"
Height (without options)	67.9"/67.8"	67.7"
Width – Excluding mirrors	71.1"	71.1"
Width – Including mirrors	81.3"	81.3"
Width – Mirrors folded	77.9"	77.9"
Minimum running ground clearance	8.4"	8.3"
Liftover height	29.6"/29.5"	29.4"/29.6"
Overhang – Front	33.7"	33.7"
Overhang – Rear	37.8"	37.8"
Ramp breakover angle	19.0°/18.9°	18.7°
Angle of approach	19.4°/19.3°	19.5°/19.6°
Angle of departure	28.3°	27.8°/27.7°

Interior

Front

Head room	40.4"	40.4"
Shoulder room	56.6"	56.6"
Hip room	53.3"	53.3"
Leg room	41.6"	41.6"

Rear

Head room	39.2"	39.2"
Shoulder room	55.9"	55.9"
Hip room	49.1"	49.1"
Leg room	35.6"	35.6"

Cargo Volume

Behind front seats	67.2 cu. ft.	66.4 cu. ft.
Behind rear seats	31.4 cu. ft.	30.9 cu. ft.

Dimensions may vary by trim level.
Cargo and load capacity limited by weight and weight distribution.

STANDARD

Mechanical

4-wheel independent suspension
16.5-gallon fuel tank capacity (15.1-gallon on Escape Hybrid)
90,000-mile tune-up interval ¹
Electric Power-Assisted Steering (EPAS)
Front and rear stabilizer bars
Front-wheel drive (FWD)
Power front disc/rear drum brakes with Anti-lock Brake System (ABS)

Safety & Security

3-point safety belt restraint system for all seating positions
Adjustable head restraints at all 5 seating positions
AdvanceTrac [®] with RSC [®] (Roll Stability Control [™])
Belt-Minder [®] front safety belt reminder
Brake/shift interlock (with automatic transmission)
Front height-adjustable shoulder safety belts
Front-seat side airbags ²
Integrated keyhead transmitter remotes (2)
LATCH – Lower anchors and tether anchors for child-safety seats (rear seat positions)
Personal Safety System [™] with dual-stage front airbags ²
Safety Canopy [®] System with side-curtain airbags ² and rollover sensor
SecuriLock [®] passive anti-theft ignition system
Side-intrusion door beams
SOS Post-Crash Alert System [™] flashes hazard lights and sounds horn after airbag deployment or safety belt pretensioner activation in certain collisions
Tire Pressure Monitoring System (excludes spare)

Interior

60/40 split-folding rear bench seat with tip-fold-flat latches
2 power points (1 in each row)
Air conditioning
Auxiliary audio input jack
Covered visor vanity mirrors
Cruise control
Floor console with removable interior bins and 4 cupholders
Illuminated-entry system
Power door locks with child-safety rear door locks
Power windows with one-touch-down driver-window feature
Rear floor air ducts
Tachometer
Tilt steering wheel

Exterior

Easy Fuel [™] capless fuel filler
Liftgate with flip-up glass
Power sideview mirrors with integrated Blind Spot Mirrors and manual fold-away design
Rear-window defroster
Solar-tinted glass
Windshield wipers – Front: variable-intermittent with washer; rear: 2-speed with washer

¹Under normal driving conditions with routine fluid and filter changes.

²Always wear your safety belt and secure children in the rear seat.



ESCAPE XLS

Equipped with all standard features, plus:

Rapid Spec 100A:

- Duratec® 25–2.5L I-4 engine
- 5-speed manual transmission
- 16" cast-aluminum wheels with P235/70R16 all-season BSW tires
- AM/FM stereo/single-CD player with 4 speakers
- Black exterior door handles and sideview mirrors
- Chrome upper grille, body-color lower grille
- Cloth front bucket seats with adjustable head restraints

Available Option Groups

Rapid Spec 101A: 6-speed automatic transmission

Rapid Spec 102A: Cargo Package: roof side rails with crossbars, retractable cargo area cover and lockable wet trunk + 6-speed automatic transmission

Available Options

- Ford SYNC® voice-activated, in-vehicle communications and entertainment system¹
- Front and rear color-keyed carpeted floor mats
- Intelligent 4WD System¹

HORSEPOWER, TORQUE & EPA-ESTIMATED FUEL ECONOMY²

GAS-POWERED ESCAPE

Duratec 25–2.5L I-4 Engine

Horsepower	171 @ 6000 rpm
Torque (lb.-ft.)	171 @ 4500 rpm
5-speed manual (XLS)	22 mpg city/28 hwy.
6-speed automatic	
FWD (XLS, XLT, Limited)	20 mpg city/28 hwy.
4WD (XLS, XLT, Limited)	19 mpg city/25 hwy.

Duratec 30–3.0L V6 FFV Engine

Horsepower	240 @ 6550 rpm
Torque (lb.-ft.)	223 @ 4300 rpm
6-speed automatic	
FWD (XLT, Limited)	18 mpg city/26 hwy.
4WD (XLT, Limited)	17 mpg city/24 hwy.



ESCAPE XLT

Equipped with all standard XLS features, plus:

Rapid Spec 200A:

- 6-speed automatic transmission
- Auto-dimming rearview mirror
- Automatic headlamps
- Black roof side rails
- Compass and outside temperature display
- Front and rear color-keyed carpeted floor mats
- Front fog lamps
- Illuminated visor vanity mirrors
- Leather-wrapped steering wheel with secondary audio controls
- MyKey™ owner controls feature
- Overhead console with dual storage bins
- Premium-grade cloth seats with 6-way power driver seat
- Privacy glass
- SecuriCode™ keyless-entry keypad
- SIRIUS Satellite Radio with 6-month subscription

Available Option Groups

Rapid Spec 201A: Cargo Package: roof side rails with crossbars, retractable cargo area cover and lockable wet trunk

Rapid Spec 202A: Sun & SYNC Package: power moonroof and Ford SYNC

Rapid Spec 203A: Cargo Package + Sun & SYNC Package

Rapid Spec 204A: Cargo Package + Sun & SYNC Package + Leather Package: leather-trimmed seats and Ambient Lighting

Available Options & Packages

- 17" chrome-clad aluminum wheels with P225/65R17 all-season BSW tires (not available with Sport Package)³
- Cargo Package**
- Duratec 30–3.0L V6 Flex Fuel engine
- Ford SYNC
- Integrated side step bars (not available with Sport Package)
- Intelligent 4WD System
- Leather Package**
- Premium Sound System with single-CD player, clock and 7 speakers (including an 8" subwoofer) with 320 watts³
- Sport Appearance Package:** high-gloss Black grille, lower front appliqué, sideview mirrors and liftgate spoiler; Blacked-out headlamp treatment; 17" premium Black wheels with machined-finish outer ring and P225/65R17 all-season BSW tires; body-color door handles and rocker moldings; Charcoal Black cloth seating; Ebony Black interior accents; chrome finish on interior door handles, air register bezels and shifter knob insert⁴
- Trailer Tow Prep Package:** Class II 3500-lb. receiver and trailer wiring harness with 4-pin connector (V6 only)



ESCAPE LIMITED

Equipped with all standard XLT features, plus:

Rapid Spec 300A:

- 16" bright machined-aluminum wheels
- AM/FM stereo/single-CD player with 6 speakers
- Ambient Lighting
- Body-color door handles and heated sideview mirrors
- Chrome finish on interior door handles, air register bezels and shifter insert
- Chrome upper and lower grilles, liftgate garnish and roof-rail inserts
- Ebony Black-trimmed center stack
- Ford SYNC
- Premium leather-trimmed heated front seats
- Cargo Package**

Available Option Groups

Rapid Spec 301A: Moon & Tune Package: power moonroof and Premium Sound System with single-CD player, clock and 7 speakers (including an 8" subwoofer) with 320 watts

Rapid Spec 302A: Limited Luxury Package: Dual-zone Electronic Automatic Temperature Control, Reverse Sensing System, Rear View Camera and Universal Garage Door Opener + Moon & Tune Package

Available Options and Packages

- 17" chrome-clad aluminum wheels with P225/65R17 all-season BSW tires
- Active Park Assist⁵
- Duratec 30–3.0L V6 Flex Fuel engine
- Integrated side step bars
- Intelligent 4WD System
- Trailer Tow Prep Package**
- Voice-activated Navigation System with nearly 10-gigabyte hard drive, single-disc Premium Sound System and SIRIUS Travel Link™ services with 6-month subscription⁶

¹Requires Rapid Spec 101A. ²2009 model year ratings. Fuel economy when operating on E85 will yield different values than gasoline. See *Fuel Economy Guide* for more information. ³Requires Rapid Spec 201A, 202A, 203A or 204A. ⁴Available with Sangria Red Metallic, Ingot Silver Metallic or Black exterior colors. Includes roof rails only when ordered with Cargo Package or Sun & SYNC Package. Not available with 17" wheels or integrated side step bars. ⁵Requires Rapid Spec 302A. ⁶Requires Rapid Spec 301A or 302A.



ESCAPE HYBRID

Equipped with all standard XLT features, plus:

Rapid Spec 500A:

Permanent-Magnet AC-synchronous electric motor
330-volt nickel-metal-hydrate (NiMH) battery pack
16" cast-aluminum wheels
110-volt AC power outlet
Body-color upper and lower grilles
Dual-zone Electronic Automatic Temperature Control
Ford SYNC [®]
Regenerative Braking System

Available Options

Black roof-rail crossbars
Integrated side step bars
Intelligent 4WD System
Power moonroof with sunshade and mini-overhead console
Voice-activated Navigation System with nearly 10-gigabyte hard drive, single-disc Premium Sound System, Hybrid Energy Flow and Power & Efficiency monitors, and SIRIUS Travel Link™ services with 6-month subscription



ESCAPE HYBRID LIMITED

Equipped with all standard Hybrid features, plus:

Rapid Spec 501A:

16" bright machined-aluminum wheels
AM/FM stereo/single-CD player with 6 speakers
Ambient Lighting
Automatic headlamps
Body-color door handles and heated sideview mirrors
Chrome interior door handles, air register bezels and shifter insert
Chrome upper and lower grilles, liftgate garnish and roof-rail inserts
Ebony Black-trimmed center stack
Power moonroof
Premium leather-trimmed heated front seats
Reverse Sensing System
Black roof-rail crossbars
SecuriCode™ keyless-entry keypad

Available Options

Active Park Assist
Integrated side step bars
Intelligent 4WD System
Voice-activated Navigation System with nearly 10-gigabyte hard drive, single-disc Premium Sound System, Hybrid Energy Flow and Power & Efficiency monitors, and SIRIUS Travel Link services with 6-month subscription

HORSEPOWER, TORQUE & EPA-ESTIMATED FUEL ECONOMY¹

GAS-ELECTRIC-POWERED ESCAPE

Net horsepower	177
----------------	-----

2.5L I-4 Atkinson-Cycle Engine

Horsepower	155 @ 6000 rpm
Torque (lb.-ft.)	136 @ 4500 rpm

Permanent-Magnet AC-Synchronous Electric Motor

Horsepower	94 @ 5000 rpm
Electronically controlled Continuously Variable Transmission (eCVT)	
FWD (Hybrid, Hybrid Limited)	34 mpg city/31 hwy.
4WD (Hybrid, Hybrid Limited)	29 mpg city/27 hwy.

New Vehicle Limited Warranty. We want your Ford Escape or Escape Hybrid ownership experience to be the best it can be. So under this warranty, your new vehicle comes with 3-year/36,000-mile Bumper-to-Bumper Coverage, 5-year/60,000-mile Powertrain Warranty Coverage, 5-year/50,000-mile Safety Restraint Coverage, and 5-year/unlimited-mile Corrosion (Perforation) Coverage – all with no deductible. Escape Hybrid is also covered by an 8-year/100,000-mile Hybrid Limited Warranty.² Please ask your Ford Dealer for copies of these limited warranties.

Roadside Assistance. Covers your vehicle for 5 years or 60,000 miles, so you have the security of knowing that help may be only a phone call away should you run out of fuel, lock yourself out of the vehicle, or need towing. Your Ford Dealer can provide complete details on all of these advantages.

Ford Credit. Get the ride you want. Whether you plan to lease or finance, you'll find the choices that are right for you at Ford Credit. Ask your Ford Dealer for details or check us out at fordcredit.com.

Ford Extended Service Plan. For a purchase or lease, the Ford Extended Service Plan (ESP) gives you "Peace-of-Mind" protection designed to cover key vehicle components and protect you from the cost of unexpected repairs. Ask your dealer for a Ford ESP, the only service contract backed exclusively by Ford and honored at all Ford Lincoln Mercury dealerships.

Insurance Services. Get Ford Motor Company quality in your auto insurance. Our program offers industry-leading benefits and competitive rates. Call 1-877-367-3847, or visit us at fordvip.com for a no-obligation quote. Insurance offered by American Road Services Company (in CA, American Road Insurance Agency), a licensed agency and subsidiary of Ford Motor Company.

Comparisons based on 2009 competitive models (Small SUV class), publicly available information and Ford certification data at time of release. Some features discussed may be optional. Vehicles shown may contain optional equipment. Features shown may be offered only in combination with other options or subject to additional ordering requirements or limitations. Dimensions shown may vary due to optional features and/or production variability. Following release of the PDF, certain changes in standard equipment, options and the like, or product delays may have occurred which would not be included in these pages. Your Ford Dealer is the best source for up-to-date information. Ford Division reserves the right to change product specifications at any time without incurring obligations.

¹2009 model year ratings. See *Fuel Economy Guide* for more information.

²10-year/150,000-mile Hybrid Battery Limited Warranty in California, Connecticut, Maine, Massachusetts, New Jersey, New York, Rhode Island and Vermont. See dealer for details.

SIRIUS is a registered trademark of SIRIUS XM Radio Inc. Subscriptions governed by SIRIUS Terms and Conditions at sirius.com/serviceterms.

Microsoft is a registered trademark of Microsoft Corporation.

The Bluetooth word mark is a trademark of the Bluetooth SIG, Inc.

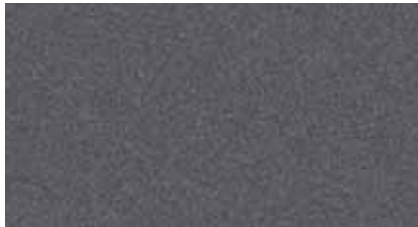
Exterior colors



Sangria Red Metallic



Sport Blue Metallic



Sterling Grey Metallic



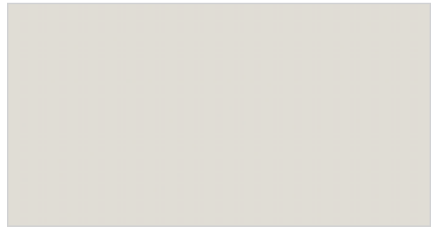
Ingot Silver Metallic



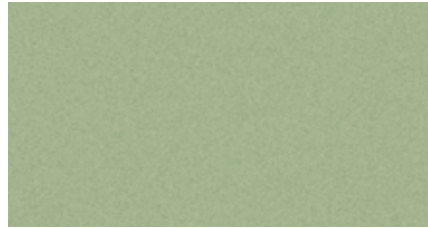
Steel Blue Metallic



Black Pearl Slate Metallic



White Suede



Kiwi Green Metallic



Black



Gold Leaf Metallic

	Interior Colors		
XLS			
Sangria Red Metallic	●		
Sport Blue Metallic	●		
Sterling Grey Metallic	●		
Ingot Silver Metallic	●		
Steel Blue Metallic	●		
White Suede	●		
Black	●		
Gold Leaf Metallic	●		
XLT			
Sangria Red Metallic ¹	●	●	●
Sport Blue Metallic	●	●	●
Sterling Grey Metallic	●	●	●
Ingot Silver Metallic ¹	●	●	●
Steel Blue Metallic	●	●	●
White Suede	●	●	
Black ¹	●	●	●
Gold Leaf Metallic	●	●	●
Limited			
Sangria Red Metallic	●		●
Sterling Grey Metallic	●		●
Ingot Silver Metallic	●		●
Steel Blue Metallic	●		●
White Suede	●		●
Black	●		●
Gold Leaf Metallic	●		●
Hybrid/Hybrid Limited			
Ingot Silver Metallic		●	
Steel Blue Metallic		●	
Black Pearl Slate Metallic		●	
White Suede		●	
Kiwi Green Metallic		●	
Black		●	

INTERIORS: ● Camel ● Stone ● Charcoal Black

¹Available on Sport Appearance Package.

Colors shown are representative only. Not all colors are available on all models. See your dealer for actual paint/trim options.

Interior colors



Cloth - Greystone (Stone interior)
Standard on XLS



Cloth - Premium Greystone (Stone interior)
Standard on XLT and Hybrid



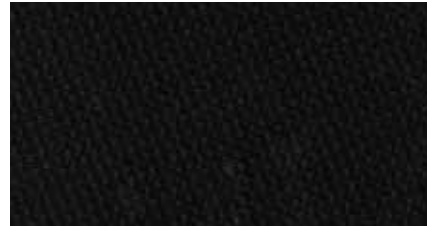
Leather - Camel
Standard on Limited, Optional on XLT



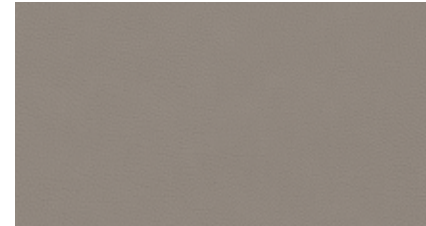
Leather - Charcoal Black
Standard on Limited, Optional on XLT



Cloth - Premium Camel
Standard on XLT



Cloth - Premium Charcoal Black
Standard on XLT



Leather - Stone
Standard on Hybrid Limited, Optional on XLT

Wheels



16" Cast-Aluminum
Standard on XLS and XLT



16" Cast-Aluminum
Standard on Hybrid



16" Bright Machined-Aluminum
Standard on Limited and Hybrid Limited



17" Premium Black with
Machined-Finish Outer Ring
Sport Appearance Package on XLT



17" Chrome-Clad Aluminum
Optional on XLT and Limited